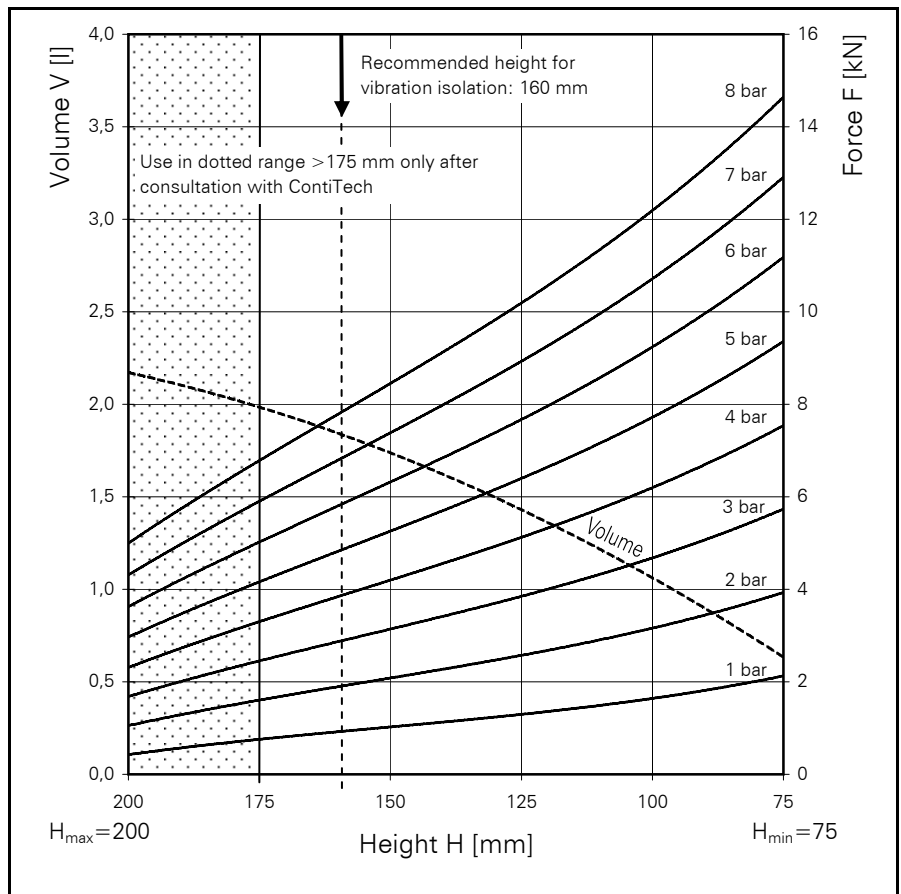
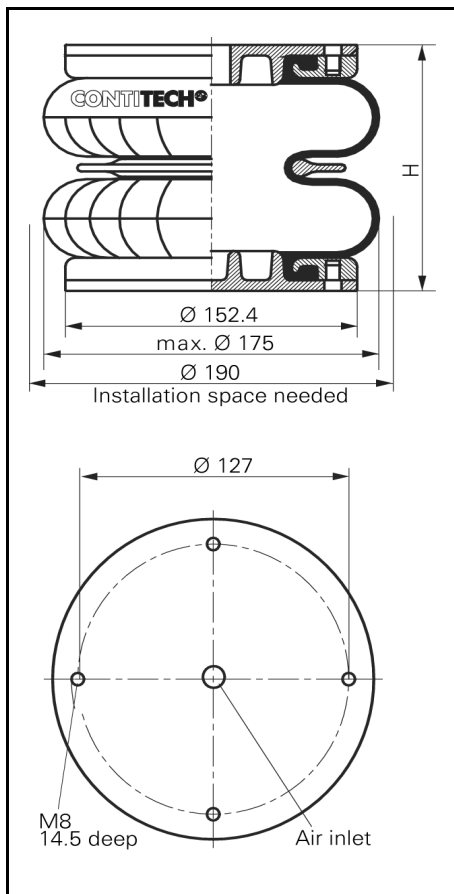


FD 76-14

CONTI® Double Convolution Air Spring



FD 76-14

Force-height diagram

Purchase order data

Type	Order No.
Rubber bellows only	50742
With aluminium plates	50585
G 1/2 air inlet	

Additional types on request

Technical data

Min. pressure	0 bar
Return force to min. height	≤ 220 N
Overall weight with plates	2.0 kg

Vibration isolation - dynamic characteristic values

Design height H: recommended 160mm, minimum 150mm

Pressure p [bar]	3	4	5	6	7	8	Vol V[l]
Force (Load) [kN]	2.90	3.95	4.96	5.98	7.00	7.90	1.85
Spring rate [N/cm]	595	760	910	1070	1245	1400	
Natural frequency [Hz]	2.3	2.2	2.2	2.1	2.1	2.1	

Pneumatic application - static characteristic values

Force F [kN]

Pressure p [bar]	3	4	5	6	7	8	Vol.[l]	
Height H [mm]	180	2.32	3.13	3.95	4.77	5.61	6.45	2.02
	160	2.89	3.87	4.86	5.84	6.84	7.83	1.85
	140	3.41	4.53	5.66	6.78	7.91	9.04	1.62
	120	3.96	5.27	6.59	7.91	9.22	10.53	1.36
	100	4.73	6.27	7.81	9.34	10.82	12.29	1.07



Service instructions

M8 = 20 Nm

G 1/2 = 25 Nm